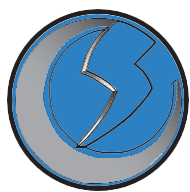




ecomobility
GREEN WORLD

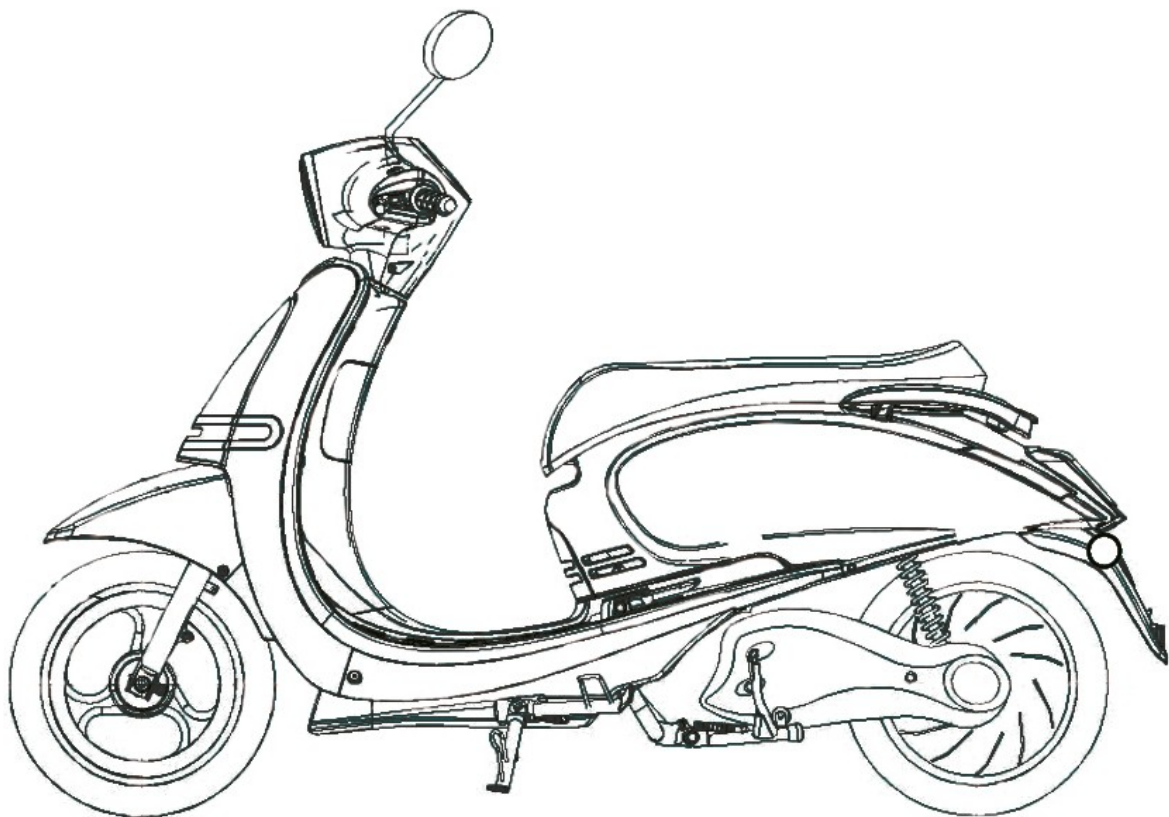
Workshop Manual



EFUN

PUSA45/90

Specific Operation



Especialistas en movilidad eléctrica



**ELECTRIC
MOTORCYCLES**

Workshop Manual



PUSA 45/90

INTRODUCTION:

This manual is just a Specific operation: "Pusa 45/90 Unboxing".

It is recommended to do a complete read of this document and to prepare any tools you are going to need.

In case of any doubts, please contact with our expert in this kind of vehicles:

José María González Díaz

Tlf: 665 724 665 / 954 229 311

Especialistas en movilidad eléctrica



Difficulty



easy

Steps



21

Time



20 minutes

Tools



- Torque Wrench
14mm
- Wrench
14mm
- Trimmer
- Cutter
- Gloves
- 3mm Allen Key



1. Set the container in an empty and free space for an easier operation



2. By using a trimmer, cut the 2 tapes that ensure the container.



3. Lift the cardboard that cover the metallic structure.
We recommend do the operation with another person.



4. Prepare the 14mm wrench and the 14mm torque wrench to open the structure.

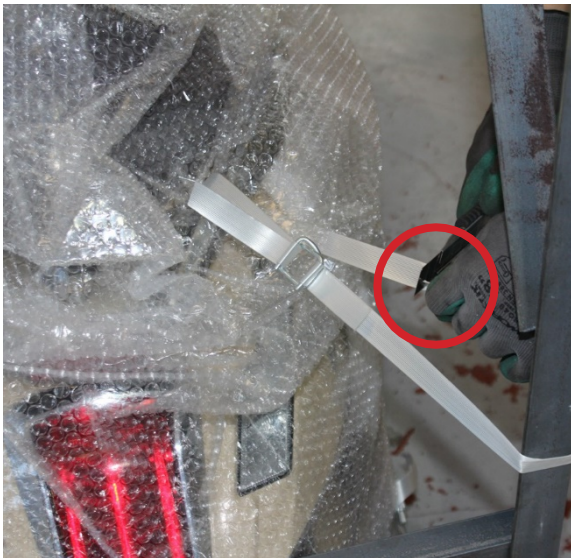


5. Set the two wrenches in both sides of the screw to remove it. One at the inner part and the other on the exterior.

Repeat the operation in the other side of the structure.



6. In the down and opposite side, repeat the operation with the same tools.



7. Using a cutter, cut the two ribbons that hold the vehicle to the structure.

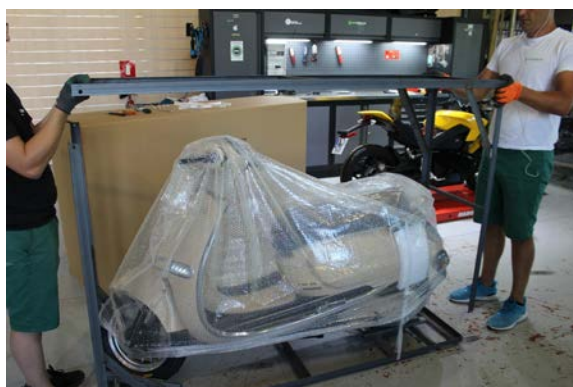


Now, it should have been used 4 tools:

- Cutter
- Trimmers
- Torque Wrench 14mm
- Wrench 14mm

And have removed:

- 4 screws
- 4 nuts
- 4 security tapes.



8. Remove the top part of the structure, first lift it up and then move to one side.

It is recommended do the operation with two people.



9. Once the top part has been removed, we apart the bubble plastic that protect the motorbike.



10. In case of finding some spots or dust, it will be necessary to clean the motorbike with some cleaning products and a microfiber suede.

If we find some defect, before keep going, with the motorbike inside the structure and with the ribbons without cutting, it is the moment to register it and to make a high-resolution photography and video and to send to warranty@ecomobilitygreenworld.com for an correct warranty application.



In any other case, the warranty will not be applied.

11. By using a cutter, cut the ribbons that hold the motorbike to the base of the structure. Repeat the operation in the other side of the vehicle.

It is recommended do the operation with a helper that hold the motorbike for higher safety.



12. Once we have removed the tapes, lift the motorbike by holding it and move it to one side, out of the structure.

It is recommended to do the operation with two people.



13. Pull back the front side of the motorbike to remove it from the lock rail.

Set the motorbike outside the structure and put on the bipod.

It is recommended to do the operation with two people.



14. Open the seat and check out all the papers, charger, mirrors and hand grip of the handle.



15. For easier application, wet the inner of the grip.

Never use some oils or fat products to do this step.



16. Softly pushing the throttle top up in the handle.

The safety screw should be put in the down part of the throttle. We can screw it with a 3mm Allen key.



17. Check out the mirrors and ensure that they are perfect.



18. Screw it by using a 14mm wrench.

Repeat the operation with the other mirror.



19. Put the mirrors in the correct position and softly screw it with the 14mm wrench.



20. Connect the battery to the exact connector to check if its functioning is correct.



21. Turn on the kill-switch to allow current in the circuit.

Check out the state of the motorbike and the main lights.